



# Lock Programmer-Interrogator/ Emergency Lock Power Supply (LPI/ELPS)

## Lock Battery Override Instructions

*For System 6000™*

All information contained herein, including but not limited to product pricing and other intellectual property, is confidential and intended for the sole use of the addressee(s) so named. Any misuse of this confidential information contained herein may result in legal action by Computerized Security Systems dba SAFLOK and its parent company.

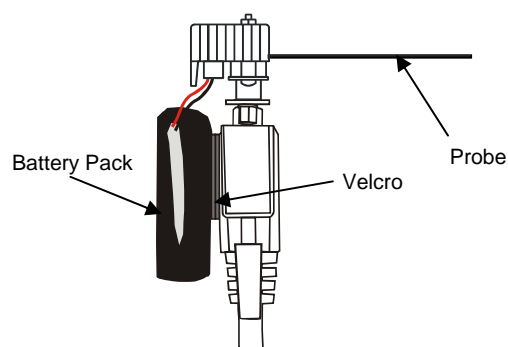
## Introduction

When connected to the handheld unit, the Lock Programmer-Interrogator/Emergency Lock Power Supply (LPI/ELPS) is used to program locks, interrogate locks, and open locks that have dead internal batteries. This device is used more frequently for lock programming and interrogation.

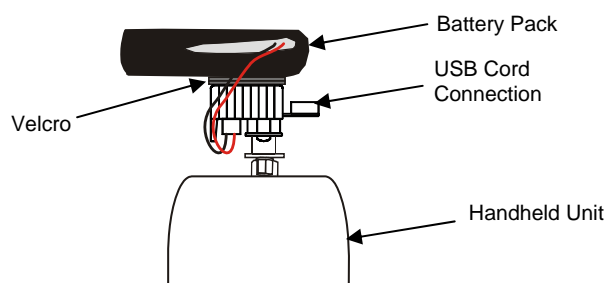
The emergency power battery pack is not required for lock programming and interrogation and is only necessary when unlocking a lock with a dead battery. The battery pack is therefore removable when not required, as it is connected with Velcro. It is also the same as a lock battery pack, which may be substituted.

**Note:** A lock with a dead battery will not flash any lights after a keycard is used. If a lock displays flashing lights after a keycard is used, please consult your lock or system manual to troubleshoot other conditions.

### LPI/ELPS Device for Magstripe and Smart Card Locks



### LPI/ELPS Device for RFID Locks



## Required Equipment

### For Magstripe/Smartcard Locks:

- Kit 72410-B
  - LPI/ELPS device (p/n 72410)
  - SAFLOK battery pack (p/n A28110)
  - Male DB25 parallel cable (p/n 754380)
  - Velco (p/n A27760-Black)
- Handheld module (p/n 701913)
- Six-foot download cable (p/n 71982)
- PC with a serial port and SAFLOK Client Application (software version 2.36 or higher)
- SAFLOK SL2500 ASIC or MT series locks (software version 81305 or higher)

### For RFID Locks:

- Kit 72400-B
  - LPI/ELPS device (p/n 72400)
  - SAFLOK battery pack (p/n A28110)
  - USB cable (p/n 71490)
  - Velco (p/n A27760-Black)
- Handheld module (p/n 701913)
- Six-foot download cable (p/n 71982)
- PC with a serial port and SAFLOK Client Application (software version 2.36 or higher)
- SAFLOK SL2500 ASIC or MT series locks (software version 81305 or higher)

## Overriding Dead Lock Batteries with the LPI/ELPS

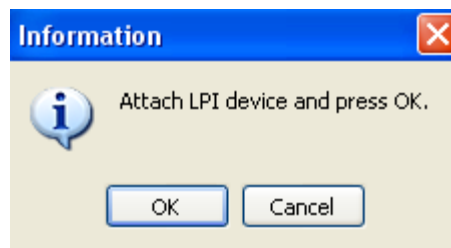
1. Open the SAFLOK Client program. The Logon PC dialog box will automatically appear. Type in the **User ID** and **Password** and click **OK**.



2. Click on the **Locks** tab, and then click on the **Program Locks** button.

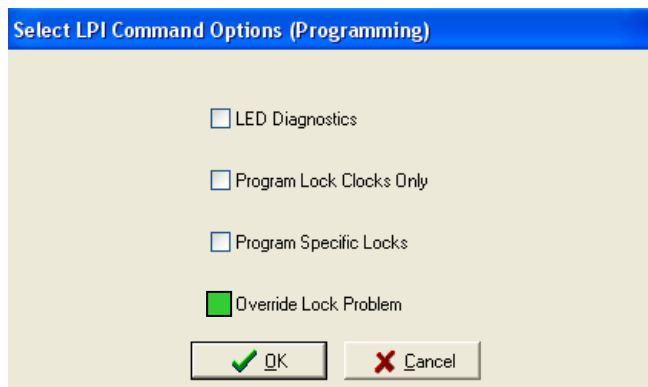


3. The Information PC dialog box will appear. Before making a selection, connect one end of the download cable to the serial port on the PC and the other end to the handheld device.



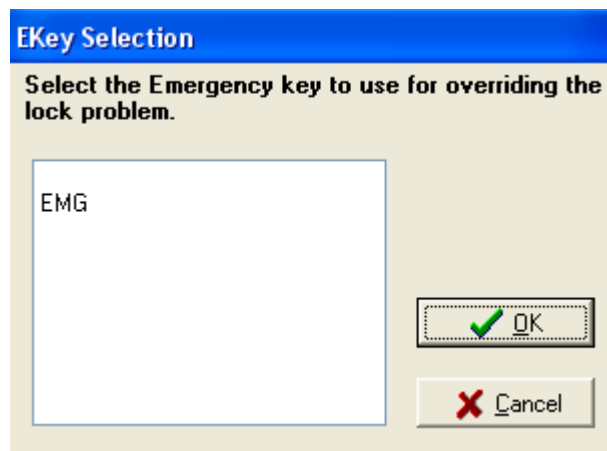
4. With the cable connected, click on **OK**.

5. At the Select LPI Command PC dialog box, select **Override Lock Problem** and click **OK** to continue.

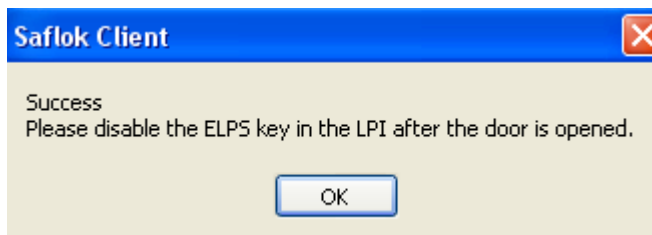


## Overriding Dead Lock Batteries with the LPI/ELPS (continued)

6. At the EKey Selection PC dialog box, click the **EMG** key in the box, and then click **OK**.



7. At the SAFLOK Client PC dialog box, click **OK**.



The handheld is now configured.

8. Now view the HH5 Main Menu screen on the handheld device. Press **2** on the keypad to move the cursor to the second menu option, "2. Take Unit to Locks." Press **ENTER**.

HH5 MAIN MENU  
02-18-06 09:09AM DST  
**2. Take Unit to Locks**  
3. Setup Menu

9. At the M254 screen, follow the instructions, then press **ENTER**.

M254: Disconnect  
Terminal Cables and  
Connect LPI Probe  
\*\*PRESS ANY KEY\*\*

10. Separate the handheld device from its base, then take the handheld device and LPI/ELPS to the lock.
11. Connect the LPI/ELPS to the handheld, be sure that the battery pack is connected, and then press **ENTER**.

## Overriding Dead Lock Batteries with the LPI/ELPS (continued)

12. On the following screen, press **6** to move the cursor to “6. Send ELPS key.” Press **ENTER**.

02-18-06 09:09AM DST  
5. Lock Vers/LED Diag  
**6. Send ELPS key**  
Select Choice ?

13. At the M252 screen, follow the on-screen instructions by pressing **ENTER**.

M252: Press Any Key and  
then Insert LPI  
Probe into Lock!  
(Press ESC to Abort)

14. Connect the probe to the lock:

- For magstripe and smart locks, insert the LPI/ELPS device into the lock's card reader slot.
- For RFID locks, plug in the probe's USB cable to the port on the lock.

15. The M251 screen will display until the LPI/ELPS device is inserted into the lock.

M251: Please Wait  
  
Programming the Lock

16. As soon as the M236 screen appears, turn the lock's handle to open the door with the LPI/ELPS device inserted.

M236: ELPS is powered  
and the lock is open  
Please turn handle  
Press Any Key

17. After the door has been opened, remove the LPI/ELPS device from the lock and unplug the battery. Press **ENTER** and then **ESC** on the handheld device.

18. The handheld device will return to the menu screen. Press **7** to move the cursor to “7. Disable ELPS key.” Press **ENTER**.

02-18-06 09:10AM DST  
6. Send ELPS key  
**7. Disable ELPS key**  
Select Choice ?

## Overriding Dead Lock Batteries with the LPI/ELPS (continued)

19. At this point, the ELPS feature has been disabled. The handheld device should be returned to its base.

**Important:** The battery pack will be drained of its power if it stays connected to the handheld. Please remove the battery pack from the LPI/ELPS when it is not in use.

**Questions?** Call Customer Service at 800.999.6213 and select option 3.



For worldwide office locations and  
contact information, visit us at  
[www.saflok.com](http://www.saflok.com).

**USA • Canada**  
Phone: **877.272.3565**

**Europe • Middle East • Africa**  
Phone: **33.1.30.13.04.04**

**Asia**  
Phone: **86.10.5861.3561**

Manufactured under one or more of the following patents:

U.S.: 4,177,657; 4,411,144; 4,534,194; 4,890,870; 5,198,643;  
5,477,041; 5,820,177; 5,986,564; 7,051,561; D494,841; D501,131  
D512,899; D519,021; D531,629; D533,009; D533,047; D533,762;  
D533,763; D535,629 CANADA: 1,252,854; 1,298,902  
U.K. 2,010,375  
Other U.S. and foreign patents pending

SAFLOK reserves the right to modify the characteristics  
and features of all products in this publication.  
©2008 SAFLOK, all rights reserved.